



## Intelligent Infrastructure Management Solutions



Total control in the palm of your hand...

- **iD** Intelligent Infrastructure Management (IIM) software for end to end connectivity management
- Handheld Barcode Scanners identify uniquely labelled components
- High quality barcode labels to ensure reliable and repeatable scanning
- Available for Category 5e and Category 6 Patch Panels, Patch Leads and Faceplates
- Compatible with **iD** Active patch panels



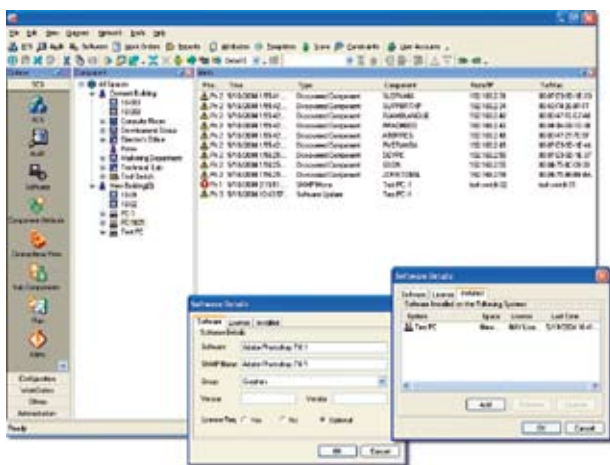
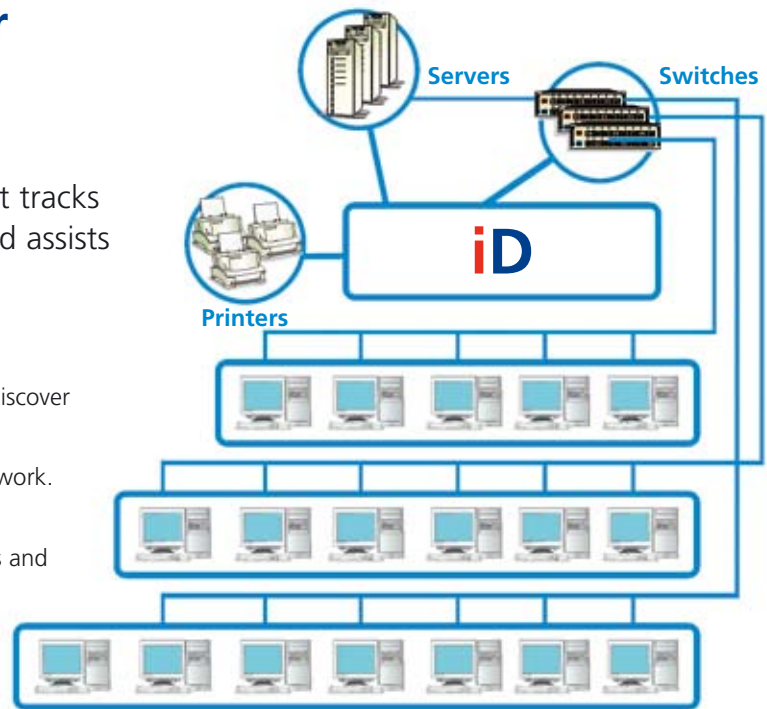
# With iD managing your infrastructure, you can

## Discover your Network...

with automatic network detection that tracks connectivity changes and additions and assists you in planning for network growth.

### iD...

- automatically interrogates network switches to discover changes in the network connectivity.
- detects new equipment as it is added to the network.
- provides real-time alerts when changes occur.
- records full information about connected devices and provides complete information on desktop and handheld devices.



## Manage your Software...

with automatic detection and alerts that ensure your software licenses are always under control.

### iD...

- automatically discovers newly installed and removed software.
- records what software licenses are installed in each PC.
- tells you the last time the PC containing a particular software was connected to the network.
- confirms the number of software licenses in use, and alerts you if licenses are exceeded.
- allows entry and viewing of the details of the software including software name, version, vendor and whether a license is mandatory, optional or not needed.

## Track your Assets...

by showing management the big picture as you capture relevant asset information and exact physical locations.

### iD...

- records any information that you want to maintain regarding an asset with configurable templates.
- quickly tracks locations of assets within the facility including equipment used for short-term projects.
- updates asset locations automatically, including the drawings, with SNMP network discovery.



## Visualise your Network...

with a broad range of information and rich floor plan images that are easy to configure and maintain.



### iD...

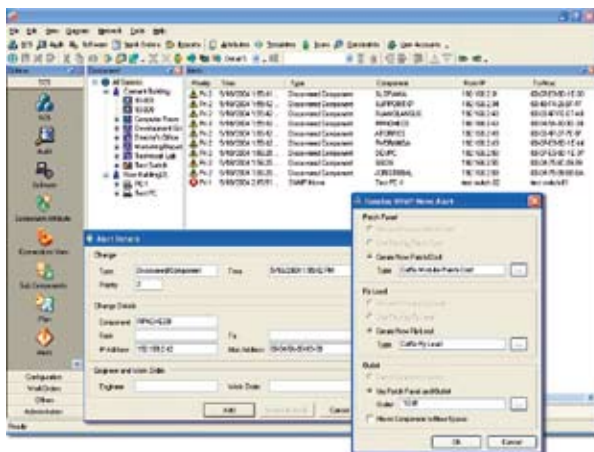
- shows the exact location of equipment and ports on a floor plan to save time and effort in locating equipment and prevent incorrect moves, adds and changes.
- provides a floor plan on the handheld which is invaluable when troubleshooting and eliminates the need to hunt under desks when looking for outlets.
- automatically updates the floor plans when moving assets in the database. It is even possible to drag-and-drop assets on the handheld and update the database.
- allows anyone familiar with Microsoft Visio to import and configure floor plans, and to export information for up-to-date printouts of the IT infrastructure. With Microsoft Excel and Visio integration combined, iD is able to provide the most accurate view of your network ever.

## Audit your Connectivity and Infrastructure...

with a portable device that audits as it scans to determine inaccuracies in connectivity and asset records.

### iD...

- audits connections in cabling to determine and resolve inaccuracies in the cabling records with no cable tracing required.
- allows multiple types of audit to support different departmental and operational functions with its own configurable list of templates and reports.
- determines whether the assets recorded in iD are the same as the actual physical assets in the facility and reports on discrepancies.
- makes auditing as simple as scanning a barcode.



## Manage your Tasks...

with organised work assignment and project management.

### iD...

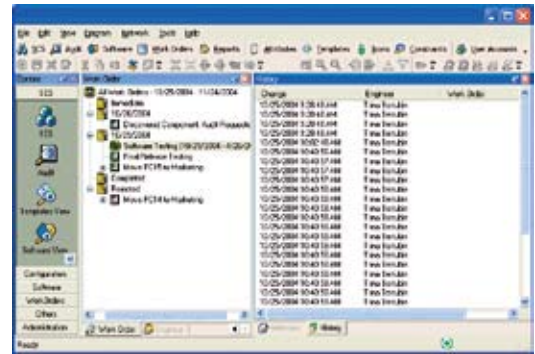
- provides and manages work-orders for efficient day-to-day task management via the desktop and Pocket PCs.
- provides full reporting of equipment, connection and work-order reports that can be used for planning and management audit requirements.
- has a project screen which can be used to reserve specific equipment as well as assign particular engineers to specific projects.
- creates work-orders with drag-and-drop.
- tracks work-orders and projects to completion.

## Product Description

The **HellermannTyton iD** Intelligent Infrastructure Solution combines sophisticated software with a range of HellermannTyton Category 5e and Category 6 products each having a unique barcode for identification. The barcodes are read using handheld barcode scanners and the software identifies their location and end to end connectivity within the network infrastructure.

Key benefits of the **iD** solution are:

- Increased staff productivity with better management of moves, adds and changes
- Changes can be instantly recorded on the handheld with just the scan of a barcode
- Faster problem diagnosis to reduce downtime
- Improved security by tracking connectivity and recognising unauthorised changes
- Better asset utilisation
- Interface connectivity with 3rd party systems
- Integration with **iD** Active patch panels.



The following products are available with unique **iD** barcode identification

### Category 5e Patch Panels

24 Port Global Patch Panel C5e iD	1/2408IDC G5E ID
48 Port Global Patch Panel C5e iD	2/4808IDC G5E ID

### Category 5e Patch Leads

0.5m Patch Lead C5e iD	RJ45C5E-0.5M GY ID
1m Patch Lead C5e iD	RJ45C5E-1M GY ID
2m Patch Lead C5e iD	RJ45C5E-2M GY ID
3m Patch Lead C5e iD	RJ45C5E-3M GY ID
4m Patch Lead C5e iD	RJ45C5E-4M GY ID
5m Patch Lead C5e iD	RJ45C5E-5M GY ID

### Category 6 Patch Panels

24 Port Global Patch Panel C6 iD	1/2408IDC G6 ID
48 Port Global Patch Panel C6 iD	2/4808IDC G6 ID

### Category 6 Patch Leads

0.5m Patch Lead C6 iD	RJ45NGB-0.5M GY ID
1m Patch Lead C6 iD	RJ45NGB-1M GY ID
2m Patch Lead C6 iD	RJ45NGB-2M GY ID
3m Patch Lead C6 iD	RJ45NGB-3M GY ID
4m Patch Lead C6 iD	RJ45NGB-4M GY ID
5m Patch Lead C6 iD	RJ45NGB-5M GY ID

### Alpha Snap Faceplates for Category 5e & Category 6 Outlets

Single Gang Faceplate AS Bevelled White iD	ASFP01 W ID
Single Gang Faceplate AS Flat White iD	ASFP01/F W ID
Dual Gang Faceplate AS Bevelled White	ASFP02 W ID
Dual Gang Faceplate AS Flat White iD	ASFP02/F ID

### Easyclip Style Faceplates for Category 5e & Category 6 Outlets

Single Gang Faceplate EC White iD	ECFP01 W ID
Dual Gang Faceplate EC White iD	ECFP02 W ID

For more information and a product demonstration please contact your HellermannTyton representative.

**HellermannTyton**  
Network Sciences