



Connector clips

Fixing Elements designed for connection interfaces used in the automotive industry

MADE FOR REAL 

HellermannTyton S.r.l.
Via Visco, 3/5
35010 Limena (PD)
Tel: +39 049 767 870
Fax: +39 049 767 985
E-Mail: info@HellermannTyton.it
www.HellermannTyton.it

The aim of this brochure

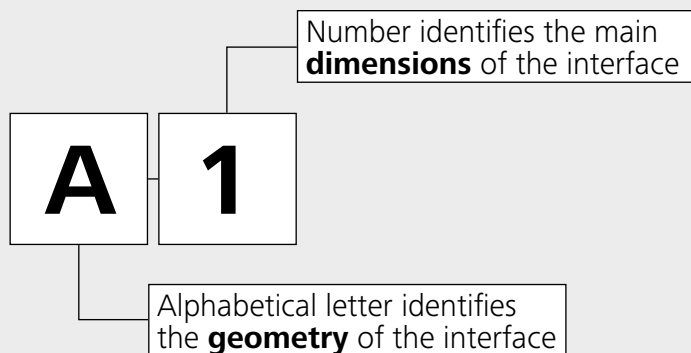
To meet the many demands for classification of Connector Clips based on Connector Interface and not for fixing element, we have created a new subdivision presented below. This allows a benefit in terms of speeding up the application for our customers.

Therefore, different types of Connector Clips have been identified based on the shape of the Connector Interface, further subdivided on the basis of their size.

How to read the brochure

We have identified 37 different types of Connector Interfaces according to their geometry and dimension.

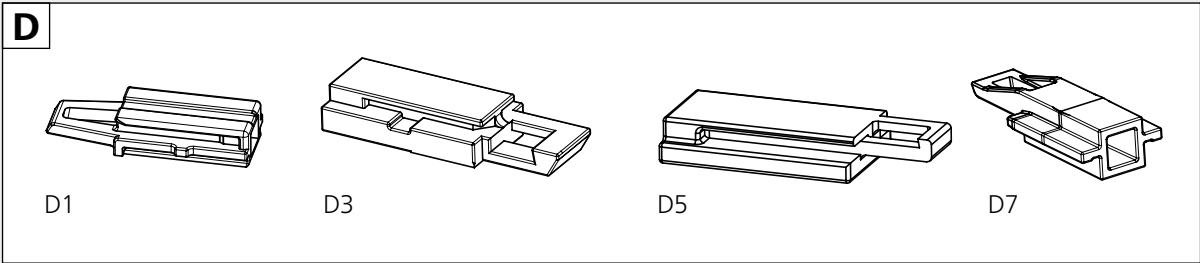
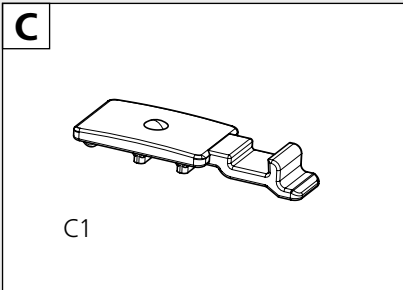
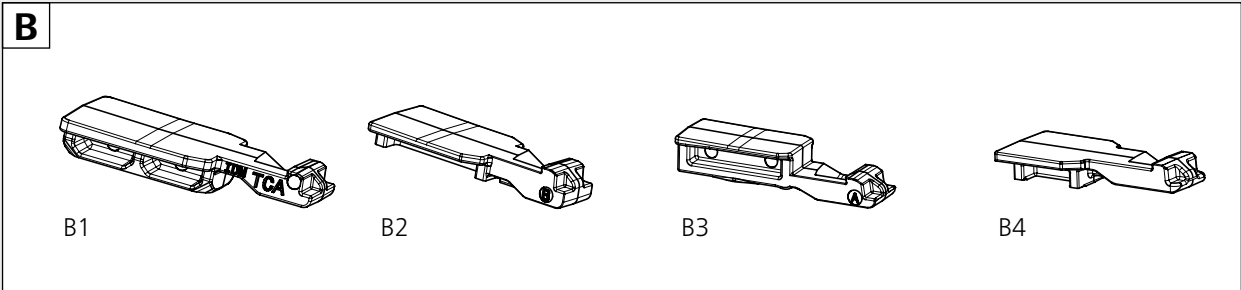
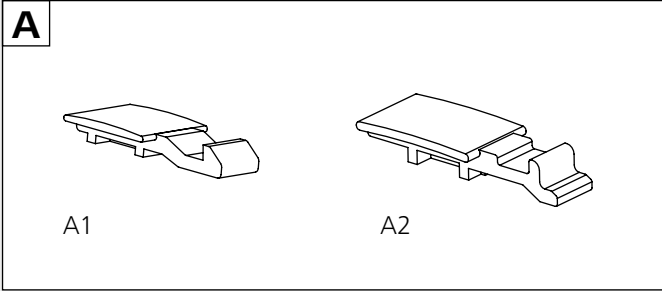
Following a legend for helping you in this division:



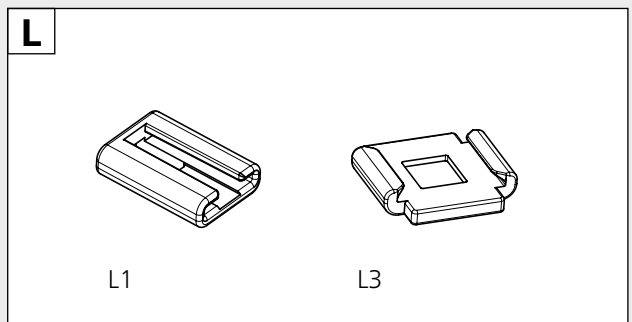
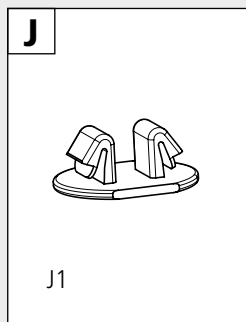
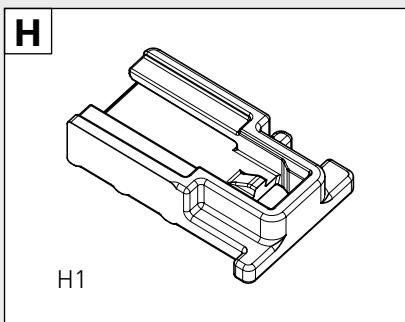
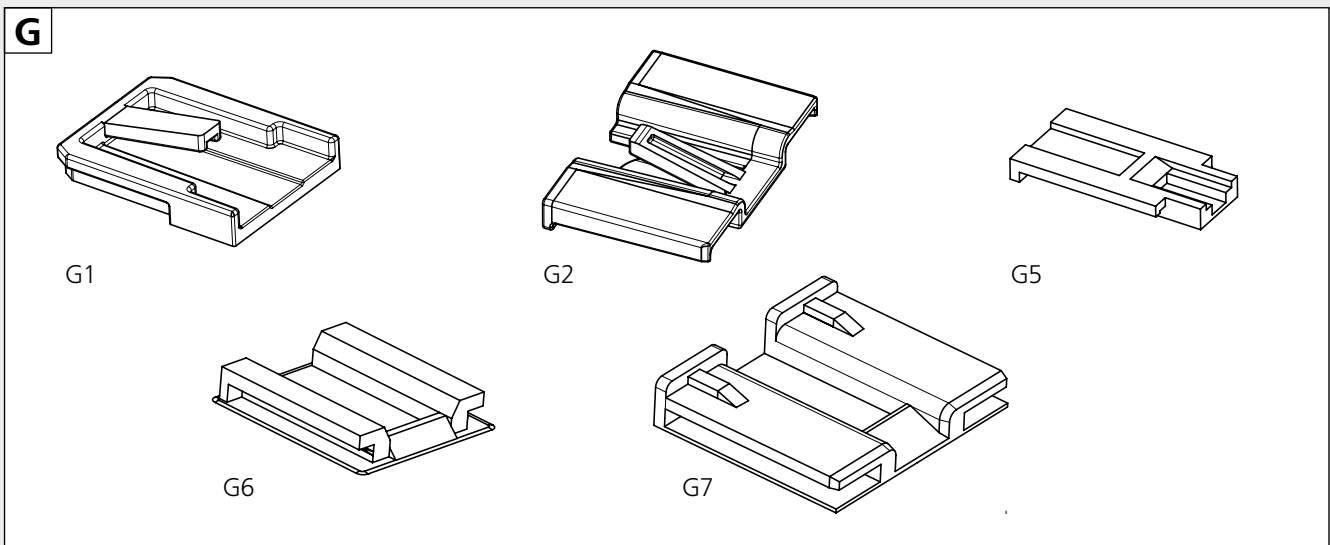
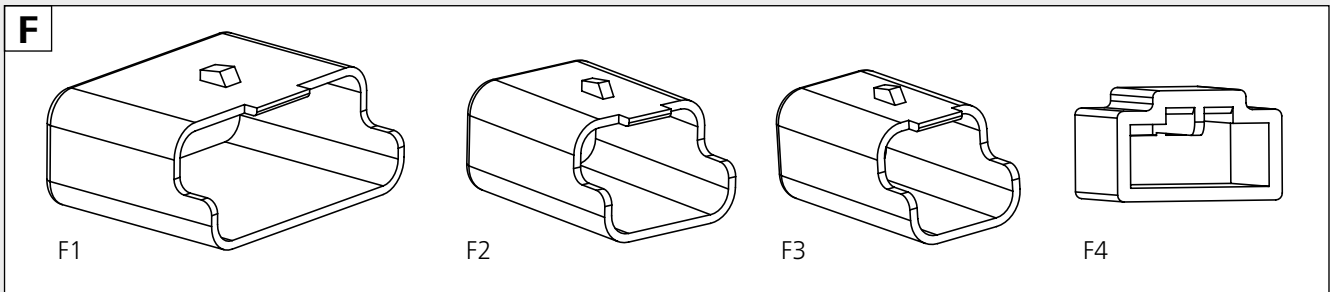
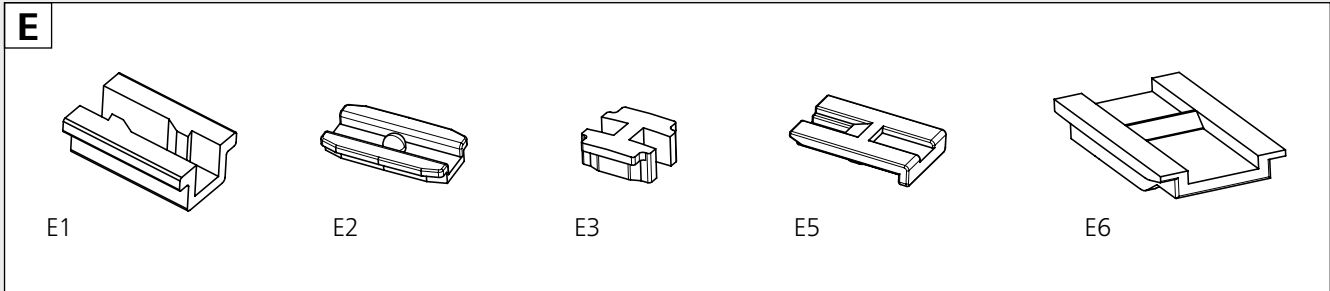
Example:
Connector Interface – Type A1

The technical drawing illustrates the Connector Interface Type A1. It includes an isometric view on the left and two orthographic views on the right. The side view shows dimensions: a total height of 1.7 ± 0.2 , a central width of 7 ± 0.4 , and a bottom thickness of 1 ± 0.2 . The end view shows a total length of (22) , a top thickness of 6 ± 0.3 , a bottom thickness of 10.4 ± 0.5 , and a central width of $12 \begin{matrix} +0.6 \\ -0.2 \end{matrix}$.

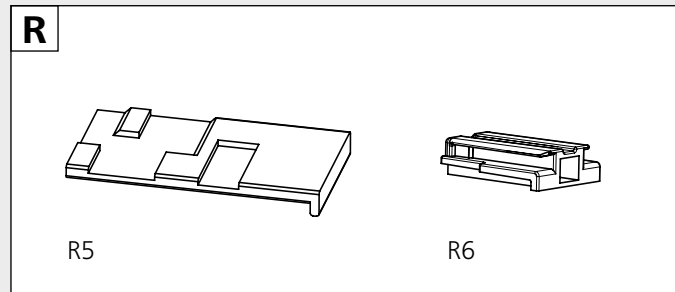
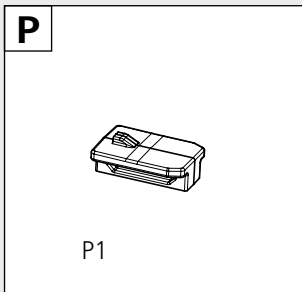
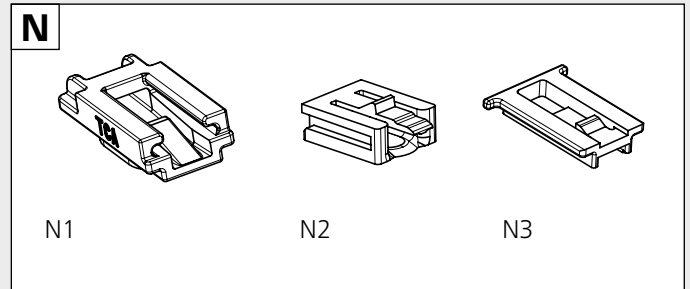
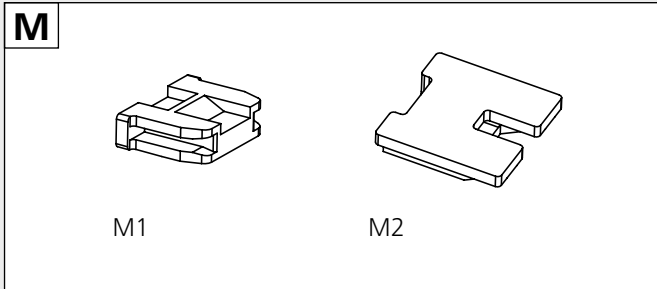
Connector Interfaces at a glance



Connector Interfaces at a glance – continued



Connector Interfaces at a glance – continued

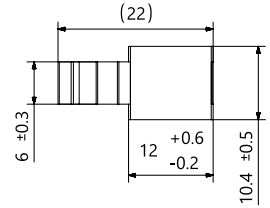
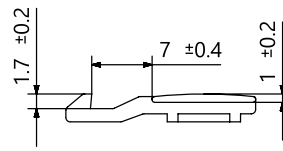
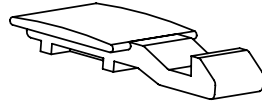


Content

| | | | | | | | |
|----|----------------|----|----------------|----|----------------|----|----------------|
| A1 | Page 6 | D7 | Page 20 | G1 | Page 28 | M2 | Page 33 |
| A2 | Page 8 | E1 | Page 21 | G2 | Page 29 | N1 | Page 34 |
| B1 | Page 10 | E2 | Page 23 | G5 | Page 29 | N2 | Page 34 |
| B2 | Page 11 | E3 | Page 24 | G6 | Page 30 | N3 | Page 35 |
| B3 | Page 15 | E5 | Page 25 | G7 | Page 30 | P1 | Page 35 |
| B4 | Page 16 | E6 | Page 25 | H1 | Page 31 | R5 | Page 36 |
| C1 | Page 17 | F1 | Page 26 | J1 | Page 31 | R6 | Page 36 |
| D1 | Page 18 | F2 | Page 26 | L1 | Page 32 | | |
| D3 | Page 20 | F3 | Page 27 | L3 | Page 32 | | |
| D5 | Page 20 | F4 | Page 27 | M1 | Page 33 | | |

Connector Clips

Connector Interface –
Type A1

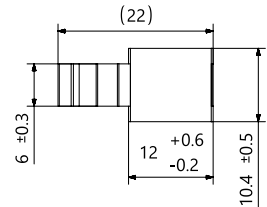
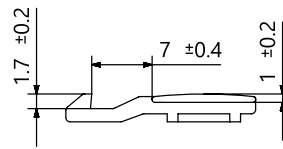
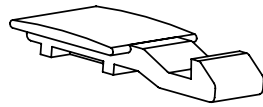


| PART DESCRIPTION | Drawing | for Hole Ø (FH) | Panel Thickness | Height (H) | Length (L) | Width (W) | Article-No. |
|---------------------------------|---------|-----------------|-----------------|------------|------------|-----------|-------------|
| Connector Cap | | | | | | | |
| CCA11ALD90°-PA6GF30-BK | | - | - | 10.3 | 22.8 | 17.3 | 151-03172 |
| Connector Clip, edge | | | | | | | |
| CCEC3.0TP-PA66HIRHS-BK | | - | 1.0 - 3.0 | 11.9 | 23.5 | 10.4 | 151-00611 |
| CCEC3.0SV-PA66HIRHS-BK | | - | 1.0 - 3.0 | 15.0 | 23.5 | 13.4 | 151-01058 |
| CONNECTOR-CLIP EC6-PA66HIRHS-BK | | - | 1.0 - 3.0 | 15.0 | 24.0 | 10.4 | 150-92600 |
| EC6mod-PA66HIRHS-BK | | - | 1.0 - 3.0 | 15.5 | 22.0 | 10.4 | 151-00464 |
| CCEC3.0TP-PA66HIRHS-BK | | - | 1.0 - 3.0 | 18.1 | 23.5 | 10.4 | 151-02270 |
| EC11-PA66HIRHS-BK | | - | 1.5 - 3.0 | 10.4 | 24.0 | 12.5 | 155-40602 |
| EC42-PA66HIRHS-BK | | - | 1.5 - 4.0 | 18.0 | 24.0 | 13.4 | 151-00429 |
| EC43-PA66HIRHS-BK | | - | 1.5 - 4.0 | 18.0 | 24.0 | 13.4 | 151-00430 |

All dimensions in mm. Subject to technical changes.

Connector Clips

Connector Interface –
Type A1

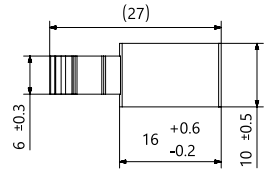
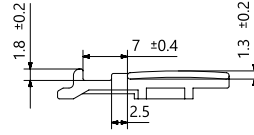
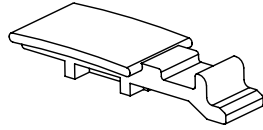


| PART DESCRIPTION | Drawing | for Hole Ø (FH) | Panel Thickness | Height (H) | Length (L) | Width (W) | Article-No. |
|---|---------|-----------------|-----------------|------------|------------|-----------|-------------|
| ECC1CPT-PA66HIRHS-BK | | - | 3.0 - 6.0 | 18.0 | 23.9 | 16.9 | 151-00499 |
| CC10EC1.5SV-PA6-BK | | 6.5 | 1.0 - 1.4 | 10.9 | 32.4 | 19.0 | 151-03285 |
| Connector Clip, oval hole, arrow head | | | | | | | |
| Steckerhalter-Oval-PA46-GY | | 6.2 - 12.2 | 0.5 - 3.0 | 15.8 | 29.5 | 22.0 | 151-01854 |
| ECC1CPT-PA66HIRHS-BK | | 6.2 - 12.2 | 0.5 - 3.0 | 15.8 | 29.5 | 22.0 | 133-00004 |
| Connector Clip Oval II-PA66HIRHS-BK | | 6.2 x 12.2 | 2.5 - 4.5 | 18.2 | 22.0 | 27.5 | 133-00533 |
| Connector Clip, oval hole, fir tree | | | | | | | |
| YCCFT82x185-PA66HIRHS | | 8.2 x 18.5 | 1.5 - 4.5 | 16.0 | 28.4 | 17.4 | 151-01842 |
| Connector Clip, round hole, arrow head, sealed | | | | | | | |
| YCCSFT6.5PT0.8-1.5MD-PA66HIRHS-BK | | 6.3 - 6.7 | 0.8 - 1.5 | 16.5 | 28.5 | 22.0 | 151-00934 |

All dimensions in mm. Subject to technical changes.

Connector Clips

Connector Interface –
Type A2

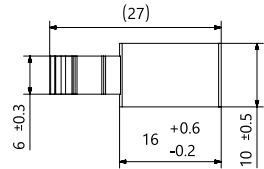
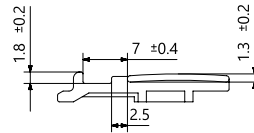
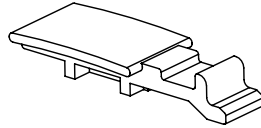


| PART DESCRIPTION | Drawing | for Hole Ø (FH) | Panel Thickness | Bundling Bar Length | Bundle Ø max. | Height (H) | Length (L) | Width (W) | Article- No. |
|--|---------|--------------------|--------------------|------------------------|------------------|---------------|---------------|--------------|-----------------|
| Bundling Clip, connector | | | | | | | | | |
| YAZ-CONN-TAPE-CLIP-PA66HS-BK | | - | - | 55.0 | - | 6.5 | 55.0 | 10.0 | 155-31102 |
| Connector Clip-PA66HIRHS-BK | | - | - | 55.0 | - | 8.8 | 55.0 | 9.0 | 151-03085 |
| Connector Clip, cable tie, 2 pieces | | | | | | | | | |
| T50RYCCA-PA66HS/PA66HIRHS-BK | | - | - | - | 50.0 | 7.5 | 200.0 | 4.6 | 156-00507 |
| T50RYCCB-PA66HS/PA66HIRHS-BK | | - | - | - | 50.0 | 7.5 | 200.0 | 4.6 | 156-00521 |
| Connector Clip, oval hole, arrow head | | | | | | | | | |
| YCCSFT62122-PA66HIRHS-BK | | 6.2 x 12.2 | 0.6 - 1.0 | - | - | 14.1 | 27.5 | 16.0 | 151-00513 |
| YCCSFT6.5x13PT2.5-3.5-PA66HIRHS-BK | | 6.5 x 13.0 | - | - | - | 16.1 | 29.5 | 19.0 | 151-01356 |
| Connector Clip, oval hole, arrow head, sealed | | | | | | | | | |
| YCCSFT6.5X13PT0.6-2.0-MD-PA66HIRHS/EPDM-BK | | 6.5 x 13.0 | 0.6 - 2.0 | - | - | 16.0 | 29.5 | 19.0 | 151-01273 |
| Connector Clip, oval hole, fir tree | | | | | | | | | |
| YCCFT62x122-PA66HIRHS | | 6.2 x 12.2 | 0.6 - 6.0 | - | - | 18.0 | 21.1 | 16.0 | 151-00180 |

All dimensions in mm. Subject to technical changes.

Connector Clips

Connector Interface –
Type A2

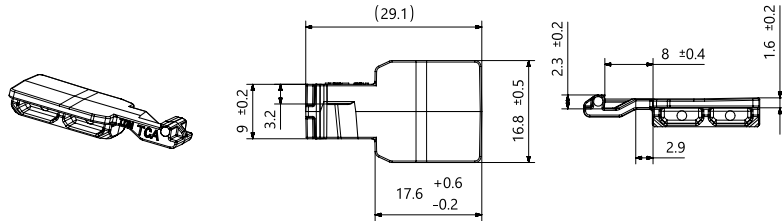


| PART DESCRIPTION | Drawing | for Hole Ø (FH) | Panel Thickness | Bundling Bar Length | Bundle Ø max. | Height (H) | Length (L) | Width (W) | Article- No. |
|---|---------|--------------------|--------------------|------------------------|------------------|---------------|---------------|--------------|-----------------|
| Connector Clip, round hole, fir tree | | | | | | | | | |
| FT6LG.YAZ.CONNECT-TS-PA66HIRHS-BK | | 6.4 - 7.1 | 0.7 - 5.1 | - | - | 15.3 | 27.0 | 16.0 | 155-30702 |
| CCFT6LG-TS-PA66HIRHS-BK | | 6.4 - 7.1 | 0.7 - 5.1 | - | - | 16.4 | 34.0 | 16.0 | 151-01141 |
| FT6LG.YAZ.CONNECT-TS-PA46-GY | | 6.4 - 7.1 | 0.70 - 5.1 | - | - | 15.3 | 27.0 | 16.0 | 151-01853 |
| FT6LG CC-PA66HIRHS-BK | | 6.4 - 7.1 | 0.75 - 6.0 | - | - | 17.7 | 27.0 | 16.0 | 151-01838 |
| FT6S-Y-CONN-TS-PA66HIRHS-BK | | 6.5 - 7.0 | 0.75 - 1.5 | - | - | 11.1 | 27.0 | 16.0 | 155-43702 |
| YCCFT6S-2-PA66HIRHS-BK | | 6.5 - 7.0 | 0.75 - 1.5 | - | - | 11.1 | 27.0 | 16.0 | 151-01841 |
| YCC-FT6-S-PA66HIRHS-BK | | 6.5 - 7.0 | 0.75 - 1.5 | - | - | 12.1 | 27.0 | 16.0 | 155-38102 |
| FT6LG.M.St.Aufn.II-PA66HIRHS-BK | | 6.5 - 7.0 | 0.75 - 5.0 | - | - | 17.3 | 27.0 | 16.0 | 155-32602 |
| CCFT8LGTS-PA66HIRHS-BK | | 7.6 - 8.4, M10 | 0.6 - 6.0 | - | - | 17.8 | 27.0 | 15.0 | 151-03371 |

All dimensions in mm. Subject to technical changes.

Connector Clips

Connector Interface –
Type B1

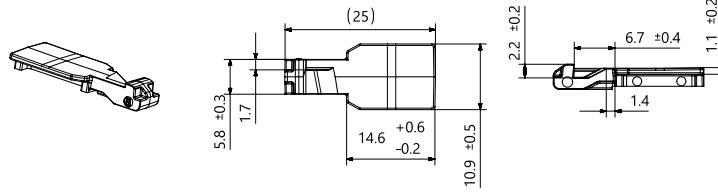


| PART DESCRIPTION | Drawing | for Hole Ø (FH) | Panel Thickness | Height (H) | Length (L) | Width (W) | Article-No. |
|--|---------|---|-----------------|------------|------------|-----------|-------------|
| Connector Clip, oval hole, fir tree | | | | | | | |
| CC17FTOVAL-PA66HIRHSUV-BK | | 6.2 x 12.2, 6.5 x 12.5, 6.5 x 13.0, 7.0 x 12.0 | 0.6 - 6.75 | 21.1 | 32.7 | 18.2 | 151-02806 |
| CC17FTOVALA-PA46-BN | | 6.2 x 12.2, 6.5 x 12.5, 6.5 x 13.0, 7.0 x 12.0 | 0.6 - 6.75 | 21.1 | 32.7 | 18.2 | 151-03030 |
| CC17FT8X15-PA66HIRHSUV-BK | | 8.0 x 15.0 | 0.6 - 6.75 | 19.57 | 32.7 | 18.2 | 151-02961 |
| CC17FT9X17-PA66HIRHSUV-BK | | 9.0 x 17.0 | 0.6 - 6.75 | 20.05 | 32.7 | 18.2 | 151-02807 |
| CC17FT12X17-PA66HIRHSUV-BK | | 12.0 x 17.0 | 0.6 - 6.75 | 21.1 | 33.1 | 20.3 | 151-02936 |

All dimensions in mm. Subject to technical changes.

Connector Clips

Connector Interface –
Type B2

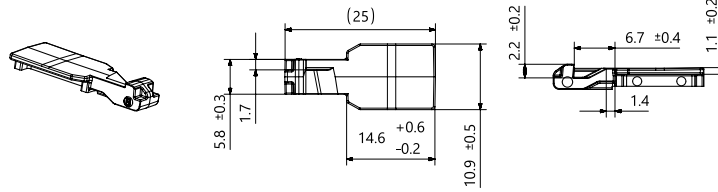


| PART DESCRIPTION | Drawing | for Hole Ø (FH) | Panel Thickness | Bundling Bar Length | Stud Ø | Height (H) | Length (L) | Width (W) | Article-No. |
|--|---------|--|-----------------|---------------------|--------|------------|------------|-----------|-------------|
| Connector Clip | | | | | | | | | |
| TRIPLE11CCBRKT-POM-NA | | - | - | - | - | 10.2 | 73.0 | 35.8 | 151-02661 |
| Connector Clip, edge | | | | | | | | | |
| EC46-PA66HIRHSUV-BK | | - | 1.0 - 3.0 | - | - | 14.15 | 35.5 | 11.18 | 151-01113 |
| EC52-PA66HIRHSUV-BK | | - | 1.0 - 3.0 | - | - | 16.5 | 34.1 | 15.0 | 151-01290 |
| CC11VEC6-PA66HIRHS-BK | | - | 3.0 - 6.0 | - | - | 17.3 | 25.7 | 14.9 | 151-02568 |
| EC55CC11-PA66HIRHSUV-BK | | - | 3.0 - 6.0 | - | - | 19.02 | 25.0 | 14.8 | 151-03112 |
| Connector Clip, oval hole, arrow head | | | | | | | | | |
| CC11AH12X17-PA66HIRHS-BK | | 12.0 x 17.0 | 6.25 - 4.75 | - | - | 30.94 | 34.5 | 28.13 | 151-03126 |
| Connector Clip, oval hole, arrow head, sealed | | | | | | | | | |
| SAHOVALCC-PA66HIRHSUV/TPE-BK | | 6.2 x 12.2, 6.5 x 12.5, 6.5 x 13.0 | 0.6 - 1.1 | - | - | 14.48 | 27.3 | 22.78 | 151-02079 |
| CCSFT6.5X12.5-MD-PA66HIRHS-BK | | 6.5 x 12.5 | 0.6 - 1.5 | - | - | 16.0 | 32.0 | 16.0 | 151-01312 |
| CCIVSFT65130-MD-PA66HIR-BK | | 6.5 x 13.0 | 0.6 - 2.0 | - | - | 15.6 | 29.0 | 10.0 | 151-01676 |
| Connector Clip, oval hole, fir tree | | | | | | | | | |
| BCC51FTOVAL-PA66HIRHS-BK | | 6.2 - 12.2, 6.5 x 12.5 | 0.6 - 6.0 | - | - | 20.0 | 51.0 | 17.6 | 151-02529 |

All dimensions in mm. Subject to technical changes.

Connector Clips

Connector Interface –
Type B2

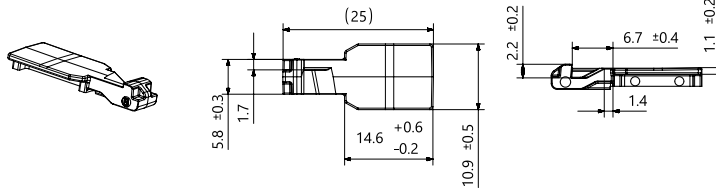


| PART DESCRIPTION | Drawing | for Hole Ø (FH) | Panel Thickness | Bundling Bar Length | Stud Ø | Height (H) | Length (L) | Width (W) | Article-No. |
|-----------------------------|---------|---|-----------------|---------------------|--------|------------|------------|-----------|-------------|
| CCOVAL6-PA46-BN | | 6.2 - 12.2, 6.5 x 12.5, 6.5 x 13.0, 7.0 x 12.0 | 0.6 - 3.0 | - | - | 15.2 | 29.3 | 17.6 | 151-02516 |
| CCOVALM-PA66HIRHS-BK | | 6.2 - 12.2, 6.5 x 12.5, 6.5 x 13.0, 7.0 x 12.0 | 0.6 - 6.0 | - | - | 20.7 | 24.9 | 17.6 | 151-02288 |
| CC22-PA66HIRHSUV-BK | | 6.2 x 12.2, 6.5 x 12.5, 6.5 x 13.0, 7.0 x 12.0 | 0.51 - 6.75 | - | - | 26.0 | 25.7 | 17.53 | 151-02051 |
| CCOVAL-S-PA66HIRHS-BK | | 6.2 x 12.2, 6.5 x 12.5, 6.5 x 13.0, 7.0 x 12.0 | 0.6 - 2.8 | - | - | 15.9 | 29.3 | 17.6 | 151-02122 |
| CCOVAL6-PA66HIRHSUV-BK | | 6.2 x 12.2, 6.5 x 12.5, 6.5 x 13.0, 7.0 x 12.0 | 0.6 - 3.0 | - | - | 15.2 | 29.3 | 17.6 | 151-01033 |
| CCOVAL-PA66HIRHSUV-BK | | 6.2 x 12.2, 6.5 x 12.5, 6.5 x 13.0, 7.0 x 12.0 | 0.6 - 6.0 | - | - | 19.98 | 29.3 | 17.63 | 151-00925 |
| CCOVAL-PA66HIRHS-NA | | 6.2 x 12.2, 6.5 x 12.5, 6.5 x 13.0, 7.0 x 12.0 | 0.6 - 6.0 | - | - | 19.98 | 29.3 | 17.63 | 151-01259 |
| CCOVAL-PPS-SR | | 6.2 x 12.2, 6.5 x 12.5, 6.5 x 13.0, 7.0 x 12.0 | 0.6 - 6.75 | - | - | 19.98 | 29.3 | 17.63 | 151-01538 |
| CCOVAL12.5SO-PA66HIRHSUV-BK | | 6.2 x 12.2, 6.5 x 12.5, 6.5 x 13.0, 7.0 x 12.0 | 0.6 - 6.75 | - | - | 26.0 | 24.9 | 17.6 | 151-03152 |
| CC16-PA66HIRHSUV-BK | | 8.0 x 14.0, 8.0 x 15.0 | 0.60 - 7.75 | - | - | 23.4 | 30.0 | 18.2 | 151-01297 |
| CC03-PA66HIRHSUV-BK | | 8.0 x 15.0 | 0.76 - 6.35 | - | - | 16.65 | 24.9 | - | 151-00496 |

All dimensions in mm. Subject to technical changes.

Connector Clips

Connector Interface –
Type B2

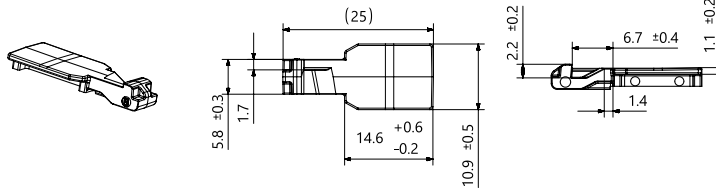


| PART DESCRIPTION | Drawing | for Hole Ø (FH) | Panel Thickness | Bundling Bar Length | Stud Ø | Height (H) | Length (L) | Width (W) | Article-No. |
|---|---------|---------------------------|-----------------|---------------------|--------|------------|------------|-----------|-------------|
| CC04-PA66HIRHSUV-BK | | 8.0 x 15.0 | 0.76 - 6.35 | - | - | 25.63 | 23.8 | 22.1 | 151-00597 |
| CC16R-PA66HIRHSUV-BK | | 8.0 x 15.0, 8.0 x 14.0 | 0.6 - 3.0 | - | - | 23.4 | 30.0 | 18.2 | 151-02206 |
| CC09-PA66HIRHSUV-BK | | 9.0 x 17.0 | 0.5 - 6.4 | - | - | 19.4 | 33.1 | 21.59 | 151-00765 |
| CC10-PA66HIRHSUV-BK | | 9.0 x 17.0 | 0.5 - 15.5 | - | - | 28.9 | 33.1 | 21.59 | 151-00807 |
| CC18-PA66HIRHSUV-BK | | 9.0 x 17.0 | 0.51 - 9.5 | - | - | 23.57 | 30.3 | 20.32 | 151-01296 |
| CC11B-PPS-SR | | 9.0 x 17.0 | 0.6 - 6.0 | - | - | 20.60 | 30.0 | 18.20 | 151-02896 |
| CC11-PA66HIRHSUV-BK | | 9.0 x 17.0, 9.0 x 16.0 | 0.6 - 6.5 | - | - | 20.6 | 30.0 | 18.2 | 151-01144 |
| CC15-PA66HIRHSUV-BK | | 12.0 x 17.0 | 0.6 - 9.0 | - | - | 23.6 | 30.3 | 20.3 | 151-01199 |
| Connector Clip, round hole, arrow head | | | | | | | | | |
| TRANSMNT90DEG11CC-PA46-BN | | 12.35 | 13.5 - 15.0 | - | - | 35.4 | 68.2 | 26.6 | 151-03197 |

All dimensions in mm. Subject to technical changes.

Connector Clips

Connector Interface –
Type B2

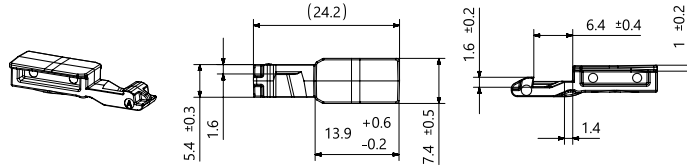


| PART DESCRIPTION | Drawing | for Hole Ø (FH) | Panel Thickness | Bundling Bar Length | Stud Ø | Height (H) | Length (L) | Width (W) | Article-No. |
|---|---------|-----------------------------|-----------------|---------------------|--------|------------|------------|-----------|-------------|
| Connector Clip, round hole, arrow head, sealed | | | | | | | | | |
| SRAH6.5CC-PA66HIRHSUV/TPE-BK | | 6.35 (hexagonal), 6.5 | 0.6 - 1.1 | - | - | 14.48 | 22.3 | 22.3 | 151-02078 |
| SRAH6.5D1.4TCC-PA66HIRHS/TPE-BK/GY | | 6.35 (hexagonal), 6.5 | 1.2 - 1.8 | - | - | 15.08 | 22.3 | 22.3 | 151-02080 |
| Connector Clip, round hole, fir tree | | | | | | | | | |
| CC11FT6TS-PA66HIRHS-BK | | 6.1 - 6.7 | 0.6 - 5.5 | - | - | 18.9 | 25.7 | 16.5 | 151-02873 |
| CC7FT6OS25-PA66HIRHS-BK | | 6.1 - 6.9 | 0.6 - 6.0 | - | - | 22.0 | 34.6 | 12.5 | 151-02885 |
| YCCFT6LGTS2-PA66HIRHS-BK | | 6.1 - 6.9 | 0.7 - 5.0 | - | - | 16.75 | 31.3 | 16.0 | 151-00965 |
| CC19-PA66HIRHSUV-BK | | 6.1 - 6.9, 6.35 (hexagonal) | 0.6 - 5.5 | - | - | 19.7 | 24.9 | 17.0 | 151-01342 |
| CCFT6LGTS12.5-PA66HIRHS-BK | | 6.5 - 7.0 | 0.7 - 6.0 | - | - | 20.9 | 37.8 | 16.0 | 151-03104 |
| CC11FTM6-PA46-BN | | M6 | 1.3 - 4.5 | - | - | 20.7 | 24.9 | 15.8 | 151-02458 |
| CC11FTM6-PA66HIRHSUV-BK | | M6 | 1.3 - 4.5 | - | - | 20.7 | 24.9 | 15.8 | 151-02459 |
| Connector Clip, stud size 5 mm | | | | | | | | | |
| SB5CC-PA66HIRHSUV-BK | | - | - | - | M5, T5 | 17.1 | 41.8 | 14.5 | 151-01044 |
| Double connector retainer | | | | | | | | | |
| CC90BRKT-PA66HIRHSUV-BK | | - | - | 108.4 | - | 10.9 | 108.4 | 53.0 | 151-01249 |

All dimensions in mm. Subject to technical changes.

Connector Clips

Connector Interface –
Type B3

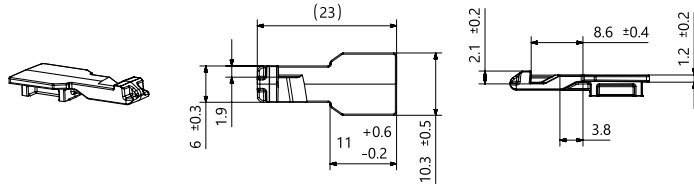


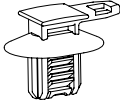
| PART DESCRIPTION | Drawing | for Hole Ø (FH) | Panel Thickness | Height (H) | Length (L) | Width (W) | Article-No. |
|--|---------|---|-----------------|------------|------------|-----------|-------------|
| Connector Clip | | | | | | | |
| CCSTDFAKRAADP-PA66HIRHS-NA | | - | - | 9.4 | 34.4 | 17.5 | 133-02489 |
| Connector Clip, edge | | | | | | | |
| EWCAP7EC1-3OTP-PA66HIRHS-BK | | - | 1.0 - 3.0 | 15.4 | 24.2 | 10.2 | 151-03173 |
| EC54-PA66HIRHSUV-BK | | - | 1.0 - 3.0 | 17.5 | 24.7 | 10.1 | 151-01042 |
| Connector Clip, oval hole, arrow head, sealed | | | | | | | |
| SAHOVAL1.4TCC7-PA66HIRHS/TPE-BK/GY | | 6.2 x 12.2, 6.5 x 12.5, 6.5 x 13.0 | 1.2 - 1.8 | 17.55 | 27.3 | 22.78 | 151-02996 |
| Connector Clip, oval hole, fir tree | | | | | | | |
| CCOVAL2-PA66HIRHSUV-BK | | 6.2 x 12.2, 6.5 x 12.5, 6.5 x 13.0, 7.0 x 12.0 | 0.6 - 6.0 | 22.35 | 29.0 | 17.6 | 151-01108 |
| CC20-PA66HIRHSUV-BK | | 9.0 x 17.0 | 0.6 - 9.5 | 26.1 | 25.5 | 20.3 | 151-01397 |
| CC17-PA66HIRHSUV-BK | | 12.0 x 17.0 | 0.6 - 9.0 | 26.2 | 29.9 | 20.3 | 151-01295 |
| Connector Clip, round hole, arrow head | | | | | | | |
| CC14-PA66HIRHS-NA | | 5.0 - 5.7 | 0.65 - 1.4 | 13.6 | 25.5 | 16.66 | 151-01243 |
| Connector Clip, round hole, fir tree | | | | | | | |
| CC21-PA66HIRHSUV-BK | | 9.0 x 17.0 | 0.6 - 3.5 | 19.55 | 19.0 | 25.15 | 151-01889 |

All dimensions in mm. Subject to technical changes.

Connector Clips

Connector Interface –
Type B4

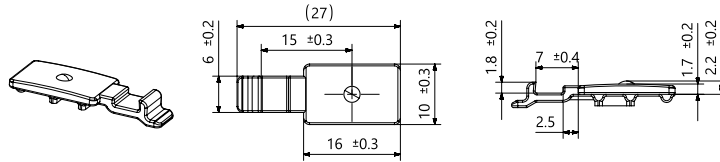


| PART DESCRIPTION | Drawing | for Hole Ø (FH) | Panel Thickness | Height (H) | Length (L) | Width (W) | Article-No. |
|--|---|-----------------|-----------------|------------|------------|-----------|-------------|
| Connector Clip, oval hole, fir tree | | | | | | | |
| CCDOP62x122-PA66HIRHS-BK |  | 6.2 x 12.2 | 0.7 - 5 | 17.65 | 20.5 | 10.3 | 151-02431 |

All dimensions in mm. Subject to technical changes.

Connector Clips

Connector Interface –
Type C1

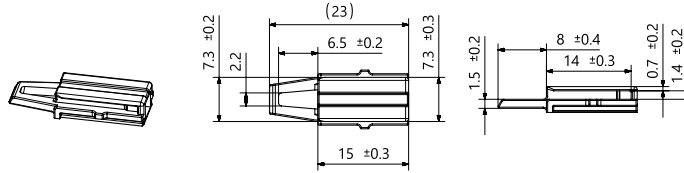


| PART DESCRIPTION | Drawing | for Hole Ø (FH) | Panel Thickness | Height (H) | Length (L) | Width (W) | Article-No. |
|---|---------|-----------------|-----------------|------------|------------|-----------|-------------|
| Connector Clip, edge | | | | | | | |
| CCEC3TR-PA66HIRHS-BK | | - | 1.0 - 3.0 | 11.7 | 27.0 | 10.0 | 151-01142 |
| Connector Clip, oval hole, arrow head | | | | | | | |
| YCCKSFT62x122PT0.7-1.3 90°-PA66HIRHS-BK | | 6.2 x 12.2 | 0.7 - 1.3 | 11.1 | 27.0 | 21.0 | 151-00833 |
| YCCKSFT62x122PT0.7-1.3-PA66HIRHS-BK | | 6.2 x 12.2 | 0.7 - 1.3 | 11.4 | 27.0 | 16.0 | 151-00835 |
| YCCKSFT62x122PT1.7-2.3 90°-PA66HIRHS-BK | | 6.2 x 12.2 | 1.7 - 2.3 | 12.1 | 27.0 | 21.0 | 151-00834 |
| YCCKSFT62x122PT1.7-2.3-PA66HIRHS-BK | | 6.2 x 12.2 | 1.7 - 2.3 | 12.4 | 27.0 | 16.0 | 151-00836 |
| CCKSFT62x122PT3.5-PA66HIRHS-BK | | 6.2 x 12.2 | 3.3 - 3.7 | 13.8 | 27.5 | 16.0 | 151-01102 |
| YCCKSFT75X150-PA66HIR-BK | | 7.5 x 15.0 | 0.7 - 1.7 | 12.7 | 27.0 | 16.0 | 151-01669 |
| Connector Clip, round hole, arrow head | | | | | | | |
| YCCKSFT6.5-PA66HIRHS-BK | | 6.3 - 6.7 | 0.7 - 1.3 | 10.9 | 27.0 | 16.0 | 151-01869 |
| YCCKSFT6.5-PT1.7-2.3-PA66HIRHS-BK | | 6.3 - 6.7 | 1.7 - 2.3 | 11.9 | 27.0 | 16.0 | 151-01870 |
| Connector Clip, round hole, fir tree | | | | | | | |
| CCFT5-6D16-PA66HIRHS-BK | | M6 | 0.7 - 4.5 | 16.3 | 27.5 | 16.0 | 151-01878 |

All dimensions in mm. Subject to technical changes.

Connector Clips

Connector Interface –
Type D1

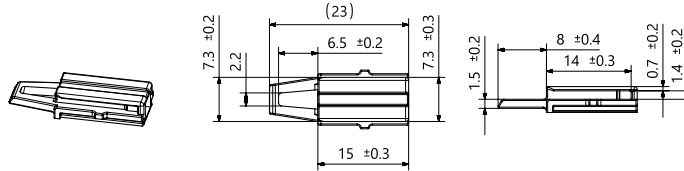


| PART DESCRIPTION | Drawing | for Hole Ø (FH) | Panel Thickness | Height (H) | Length (L) | Width (W) | Article-No. |
|--|---------|-----------------|-----------------|------------|------------|-----------|-------------|
| Connector Clip, oval hole, arrow head | | | | | | | |
| CCIVSFT6513T4-PA66-BK | | 6.5 x 13.0 | 0.6 - 4.0 | 15.6 | 19.6 | 23.6 | 151-01539 |
| CCIVSFT6.5x130-PA46-GY | | 6.5 x 13.0 | 0.7 - 3.0 | 14.6 | 23.0 | 19.6 | 151-02450 |
| CCIVSFT6.5x130-PA66HIRHS-BK | | 6.5 x 13.0 | 0.7 - 3.0 | 14.6 | 23.0 | 19.6 | 133-00392 |
| CCSFT6513PT1.8-2.5-PA66HIRHS-BK | | 6.5 x 13.0 | 1.8 - 2.5 | 18.6 | 26.5 | 16.0 | 151-02528 |
| CC20SFT712-PA66HIRHS | | 7.0 x 12.0 | 0.7 - 2.0 | 14.7 | 23.0 | 16.0 | 151-02898 |
| CCSFT8.0x15.0-PA66-BK | | 8.0 x 15.0 | 0.8 - 2.8 | 13.0 | 23.0 | 21.36 | 151-01807 |
| Connector Clip, oval hole, arrow head, sealed | | | | | | | |
| CC33SFT6.5X13-MD-PA66HIRHS/CR-BK | | 6.5 x 13.0 | 2.0 - 2.0 | 18.6 | 28.0 | 19.0 | 151-03328 |
| Connector Clip, oval hole, fir tree | | | | | | | |
| 3FAKRACCBOX9X17OFT-PA66HIRHS-BK | | 9.0 x 17.0 | 0.6 - 2.25 | 28.57 | 26.6 | 18.23 | 133-04068 |
| 4FAKRACCBOX9X17OFT-PA66HIRHSUV-BK | | 9.0 x 17.0 | 0.6 - 2.25 | 37.8 | 26.5 | 18.7 | 151-02750 |

All dimensions in mm. Subject to technical changes.

Connector Clips

Connector Interface –
Type D1

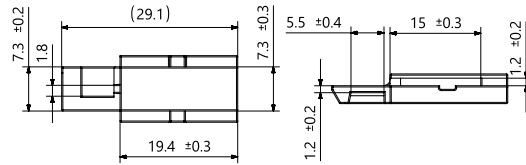
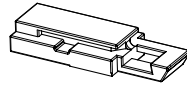


| PART DESCRIPTION | Drawing | for Hole Ø (FH) | Panel Thickness | Height (H) | Length (L) | Width (W) | Article-No. |
|---|---------|-----------------|-----------------|------------|------------|-----------|-------------|
| Connector Clip, round hole, arrow head | | | | | | | |
| CC31SFT7KH3X13-PA66HIRHS-BK | | - | 0.7 - 2.5 | 16.6 | 23.0 | 19.6 | 151-03194 |
| CCSFT5-PA66HIRHS-BK | | 4.8 - 5.2 | 0.7 - 2.3 | 11.2 | 23.0 | 16.0 | 151-00980 |
| CCSFT6.3-PA66-BK | | 6.3 - 6.5 | 0.7 - 2.5 | 13.0 | 23.0 | 21.4 | 151-01809 |
| CCSFT6.5-PA66HIRHS-BK | | 6.3 - 6.7 | 1.7 - 2.3 | 12.1 | 23.0 | 16.1 | 151-00775 |
| Connector Clip, round hole, fir tree | | | | | | | |
| CCFT6LG-PA66HIRHS-BK | | 6.0 - 6.7 | 0.7 - 4.0 | 17.0 | 23.0 | 16.1 | 151-00785 |
| CCFT6XLG-PA66HIRHS-BK | | 6.0 - 6.7 | 0.7 - 11.0 | 24.2 | 23.0 | 16.1 | 151-00786 |

All dimensions in mm. Subject to technical changes.

Connector Clips

Connector Interface –
Type D3

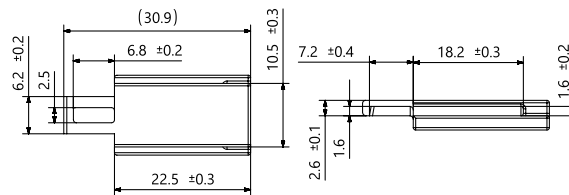
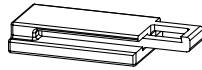


| PART DESCRIPTION | Drawing | for Hole Ø (FH) | Panel Thickness | Height (H) | Length (L) | Width (W) | Article-No. |
|--|---------|-----------------|-----------------|------------|------------|-----------|-------------|
| Connector Clip, oval hole, arrow head | | | | | | | |
| CC4AHOVAL7X12-PA66HIRHSUV-BK | | 7.0 x 12.0 | 1.4 - 1.6 | 16.0 | 30.1 | 16.0 | 151-02563 |
| Connector Clip, round hole, fir tree | | | | | | | |
| CCFT6TS11-PA46-GY | | 6.3 - 7.0 | 0.6 - 4.0 | 16.5 | 29.0 | 18.0 | 151-01294 |

All dimensions in mm. Subject to technical changes.

Connector Clips

Connector Interface –
Type D5

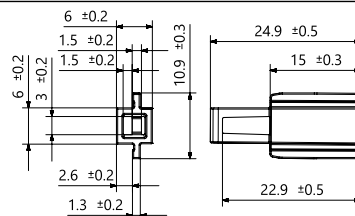
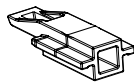


| PART DESCRIPTION | Drawing | for Hole Ø (FH) | Panel Thickness | Height (H) | Length (L) | Width (W) | Article-No. |
|--|---------|-----------------|-----------------|------------|------------|-----------|-------------|
| Connector Clip, oval hole, fir tree | | | | | | | |
| CC5AHOVAL7X12-PA66HIRHSUV-BK | | 7.0 x 12.0 | 1.4 - 1.6 | 16.6 | 32.0 | 16.0 | 151-02564 |
| CC5AHOVAL7X12CLIP-PA66HIRHSUV-BK | | 7.0 x 12.0 | 1.4 - 1.6 | 16.6 | 32.0 | 16.0 | 151-02792 |

All dimensions in mm. Subject to technical changes.

Connector Clips

Connector Interface –
Type D7

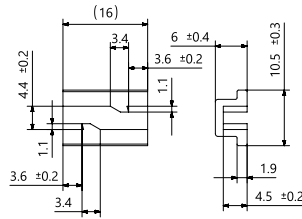
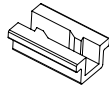


| PART DESCRIPTION | Drawing | for Hole Ø (FH) | Panel Thickness | Height (H) | Length (L) | Width (W) | Article-No. |
|---|---------|-----------------|-----------------|------------|------------|-----------|-------------|
| Connector Clip, round hole, arrow head | | | | | | | |
| CC32KHSFT6.5-PA66HIRHS-BK | | 6.5 - 7.0 | 1.7 - 2.3 | 15.0 | 25.0 | 16.3 | 151-03180 |

All dimensions in mm. Subject to technical changes.

Connector Clips

Connector Interface –
Type E1

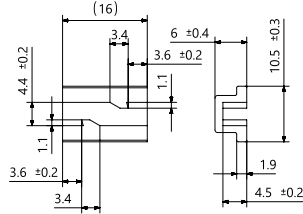
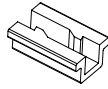


| PART DESCRIPTION | Drawing | for Hole Ø (FH) | Panel Thickness | Bundle Ø max. | Stud Ø | Height (H) | Length (L) | Width (W) | Article-No. |
|---|---------|--------------------|--------------------|------------------|-----------|---------------|---------------|--------------|-------------|
| Connector Clip, edge | | | | | | | | | |
| EC33-PA66HIRHS-BK | | - | 1.0 - 3.0 | - | - | 12.5 | 19.0 | 16.0 | 151-00192 |
| EC28-PA66HIRHS-BK | | - | 1.0 - 3.0 | - | - | 16.3 | 16.0 | 9.5 | 151-00151 |
| Connector Clip, on wire | | | | | | | | | |
| CCWA3.4-PA66HIRHS-BK | | - | - | 3.4 | - | 10.5 | 18.5 | 16.8 | 151-01876 |
| CCWA4.5-PA66HIRHS-BK | | - | - | 4.5 | - | 10.5 | 18.5 | 17.9 | 151-01392 |
| Connector Clip, oval hole, arrow head | | | | | | | | | |
| AMPKSFT62x122-90PT0.7-1.3-PA66HIRHS-BK | | 6.3 x 12.2 | 0.7 - 1.3 | - | - | 12.8 | 21.0 | 16.0 | 151-02268 |
| CCSFT7x12-PA66HIRHS-BK | | 7.0 x 12.0 | 0.8 - 2.0 | - | - | 17.6 | 17.5 | 17.5 | 151-00194 |
| CCAMPSFT7.0x12.0-PA66HIRHS-BK | | 7.0 x 12.0 | 1.2 - 2.0 | - | - | 17.6 | 16.0 | 16.0 | 155-43802 |
| Connector Clip, oval hole, fir tree | | | | | | | | | |
| CCPAEDOP6.0x12.0-PA66HIRHS-BK | | 6.2 x 12.2 | 0.6 - 6.0 | - | - | 17.5 | 20.0 | 22.5 | 133-01073 |
| Connector Clip, round hole, arrow head | | | | | | | | | |
| CC-PAEKSFT65PT06-13-PA66HIRHS-BK | | 6.3 - 6.7 | 0.6 - 1.3 | - | - | 13.4 | 16.0 | 16.0 | 151-01080 |
| CC-PAEKSFT6.5PT1.7-2.3-PA66HIRHS-BK | | 6.3 - 6.7 | 1.7 - 2.3 | - | - | 13.4 | 16.0 | 16.0 | 151-00840 |

All dimensions in mm. Subject to technical changes.

Connector Clips

Connector Interface –
Type E1

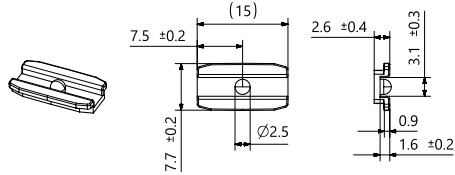


| PART DESCRIPTION | Drawing | for Hole Ø (FH) | Panel Thickness | Bundle Ø max. | Stud Ø | Height (H) | Length (L) | Width (W) | Article-No. |
|---|---------|--------------------|--------------------|------------------|-----------|---------------|---------------|--------------|-------------|
| Connector Clip, round hole, fir tree | | | | | | | | | |
| STECKERHALTER SITZ- PA66HIRHS-BK | | 6.5 - 7.0 | 0.6 - 3.0 | - | - | 15.2 | 33.5 | 10.3 | 155-36002 |
| FT6LG-AMP-PA66HIRHS-BK | | 6.5 - 7.0 | 0.7 - 6.0 | - | - | 20.5 | 16.0 | 16.0 | 155-03800 |
| FT6LG.M.AMP-AUFN.2- PA66HIRHS-BK | | 6.5 - 7.0 | 0.7 - 6.0 | - | - | 20.5 | 33.0 | 16.0 | 155-10801 |
| CCPAEFT8G-PA66/6HIRHS-BK | | 8.0 - 8.5, M10 | 1.5 - 4.0 | - | - | 19.1 | 16.0 | 16.0 | 151-03391 |
| Connector Clip, stud size 5 mm | | | | | | | | | |
| CCSBS5-PA66HIRHS-BK | | - | - | - | 5.0 | 20.0 | 16.0 | 10.8 | 151-01196 |

All dimensions in mm. Subject to technical changes.

Connector Clips

Connector Interface –
Type E2

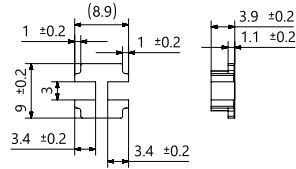


| PART DESCRIPTION | Drawing | for Hole Ø (FH) | Panel Thickness | Height (H) | Length (L) | Width (W) | Article-No. |
|--|---------|-----------------|-----------------|------------|------------|-----------|-------------|
| Connector Clip, edge | | | | | | | |
| CCIIEC6-MOD-PA66HIRHS-BK | | - | 1.0 - 3.0 | 13.9 | 7.8 | 9.4 | 151-01124 |
| Connector Clip, oval hole, arrow head | | | | | | | |
| CCII SFT6.5x13-PA66HIRHS-BK | | 6.5 x 13.0 | 0.7 - 3.0 | 13.2 | 19.6 | 14.5 | 151-02269 |

All dimensions in mm. Subject to technical changes.

Connector Clips

Connector Interface –
Type E3

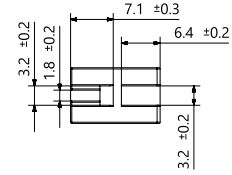
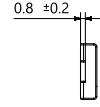
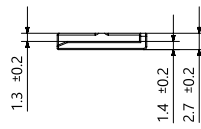
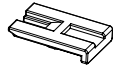


| PART DESCRIPTION | Drawing | for Hole Ø (FH) | Panel Thickness | Height (H) | Length (L) | Width (W) | Article-No. |
|---|---------|-----------------|-----------------|------------|------------|-----------|-------------|
| FT6LG2CT2-MOD-PA66HIRHS-BK | | 6.5 - 7.0 | 0.7 - 5.1 | 17.9 | 16.5 | 16.5 | 151-01127 |
| Connector Clip, edge | | | | | | | |
| EC45-PA66HIRHS-BK | | - | 1.0 - 3.0 | 15.35 | 15.0 | 12.5 | 151-00460 |
| EC JAE CC-PA66HIRHS-BK | | - | 1.0 - 3.0 | 15.8 | 15.0 | 9.0 | 151-00472 |
| EC32-PA66HIRHS-BK | | - | 1.0 - 3.0 | 25.7 | 15.0 | 19.1 | 151-01862 |
| Connector Clip, round hole, fir tree | | | | | | | |
| FT6LG.JAE.CONNECT.TS-PA66HIRHS-BK | | 6.5 - 7.0 | 0.7 - 5.1 | 17.9 | 24.0 | 16.0 | 151-00459 |

All dimensions in mm. Subject to technical changes.

Connector Clips

Connector Interface –
Type E5

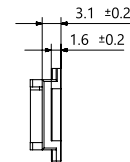
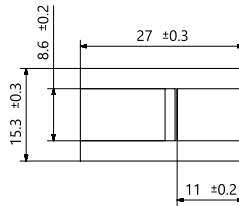
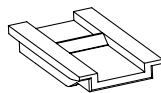


| PART DESCRIPTION | Drawing | for Hole Ø (FH) | Panel Thickness | Height (H) | Length (L) | Width (W) | Article-No. |
|--|---------|-----------------|-----------------|------------|------------|-----------|-------------|
| Connector Clip, oval hole, arrow head, sealed | | | | | | | |
| CC9SFT7x12-MD-PA66HIRHS-BK | | 7.0 x 12.0 | 0.7 - 1.5 | 13.7 | 25.0 | 19.0 | 151-02656 |
| Connector Clip, round hole, arrow head | | | | | | | |
| CC11SFT712-PA66HIRHS-BK | | 7.0 x 12.0 | 1.8 - 2.8 | 14.2 | 27.2 | 17.4 | 151-03002 |

All dimensions in mm. Subject to technical changes.

Connector Clips

Connector Interface –
Type E6

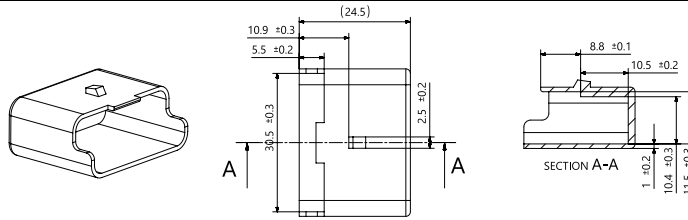


| PART DESCRIPTION | Drawing | for Hole Ø (FH) | Panel Thickness | Height (H) | Length (L) | Width (W) | Article-No. |
|---|---------|-----------------|-----------------|------------|------------|-----------|-------------|
| Connector Clip, round hole, fir tree | | | | | | | |
| CC-V1FT6-PA66HIRHS-BK | | 6.1 - 6.9 | 0.6 - 5.0 | 27.0 | 18.9 | 15.6 | 151-01618 |

All dimensions in mm. Subject to technical changes.

Connector Clips

Connector Interface –
Type F1

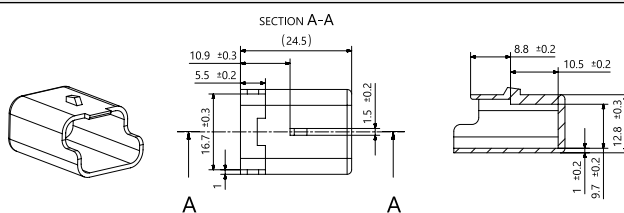


| PART DESCRIPTION | Drawing | for Hole Ø (FH) | Panel Thickness | Height (H) | Article-No. |
|---|---------|-----------------|-----------------|------------|-------------|
| Connector Clip, oval hole, fir tree | | | | | |
| CP61DOP-PA66HIRHS-BK | | 6.2 x 12.2 | 0.60 - 5.00 | 26.8 | 151-00918 |
| Connector Clip, round hole, fir tree | | | | | |
| CP6FT6-PA6HIR-BK | | 6.2 - 6.5 | 0.7 - 5.0 | 25.5 | 151-00162 |

All dimensions in mm. Subject to technical changes.

Connector Clips

Connector Interface –
Type F2

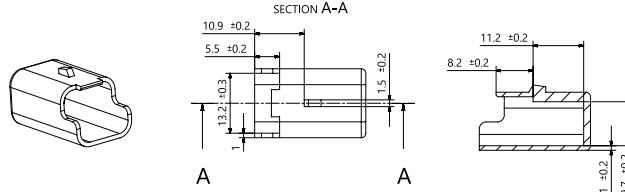


| PART DESCRIPTION | Drawing | for Hole Ø (FH) | Panel Thickness | Height (H) | Article-No. |
|----------------------|---------|-----------------|-----------------|------------|-------------|
| Connector Cap | | | | | |
| CP3FT6-PA66HIRHS-BK | | 6.2 - 6.5 | 0.7 - 5.0 | 24.9 | 151-00163 |
| CP31DOP-PA66HIRHS-BK | | 6.2 x 12.2 | 0.6 - 5.0 | 26.1 | 151-00214 |

All dimensions in mm. Subject to technical changes.

Connector Clips

Connector Interface –
Type F3

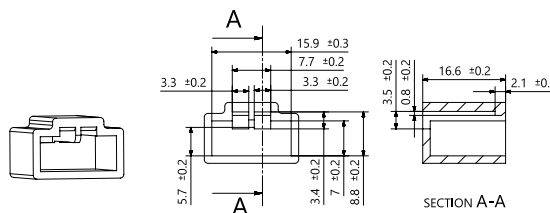


| PART DESCRIPTION | Drawing | for Hole Ø (FH) | Panel Thickness | Height (H) | Article-No. |
|----------------------|---------|-----------------|-----------------|------------|-------------|
| Connector Cap | | | | | |
| CP2FT6-PA66HIRHS-BK | | 6.2 - 6.5 | 0.7 - 5.0 | 23.9 | 151-00216 |
| CP2FT6-PA46-GY | | 6.2 - 6.5 | 0.70 - 5.00 | 23.9 | 151-00914 |
| CP21DOP-PA66HIRHS-BK | | 6.2 x 12.2 | 0.6 - 5.0 | 26.1 | 151-00465 |
| CP21DOP-PA46-GY | | 6.2 x 12.2 | 0.60 - 5.00 | 26.1 | 151-00915 |

All dimensions in mm. Subject to technical changes.

Connector Clips

Connector Interface –
Type F4

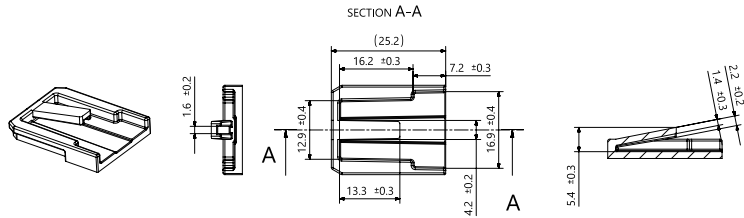


| PART DESCRIPTION | Drawing | Panel Thickness | Height (H) | Length (L) | Width (W) | Article-No. |
|--------------------------|---------|-----------------|------------|------------|-----------|-------------|
| Connector Cap | | | | | | |
| Edge-Clip25-PA66HIRHS-BK | | 1.0 - 3.0 | 23.8 | 18.9 | 19.6 | 133-00075 |

All dimensions in mm. Subject to technical changes.

Connector Clips

Connector Interface –
Type G1

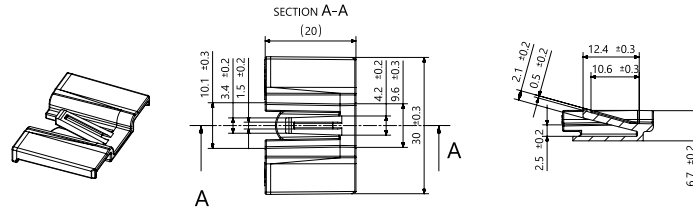


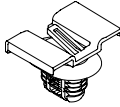
| PART DESCRIPTION | Drawing | for Hole Ø (FH) | Panel Thickness | Height (H) | Length (L) | Width (W) | Article-No. |
|--|---------|---|-----------------|------------|------------|-----------|-------------|
| Connector Clip, oval hole, arrow head | | | | | | | |
| CC7SFT6.5x13-PA66HIRHS | | 6.5 x 13.0 | 1.2 - 2.0 | 19.6 | 24.0 | 19.5 | 151-02793 |
| Connector Clip, oval hole, arrow head, sealed | | | | | | | |
| CC5SFT65x130-MD-PA66HIRHS-BK | | 6.5 x 13.0 | 0.6 - 1.5 | 20.6 | 25.2 | 19.5 | 151-02859 |
| Connector Clip, oval hole, fir tree | | | | | | | |
| CCLOP62X122-PA66HIRHS-BK | | 6.2 x 12.2 | 15.0 | 28.4 | 31.2 | 19.7 | 151-00855 |
| CCOVAL23OS10-PA66HIRHS-BK | | 6.2 x 12.2, 6.5 x 12.5, 6.5 x 13.0, 7.0 x 12.0 | 0.6 - 6.75 | 22.87 | 35.2 | 19.7 | 133-04724 |
| CCOVAL3-PA66HIRHSUV-BK | | 6.2 x 12.2, 6.5 x 12.5, 6.5 x 13.0, 7.0 x 12.0 | 0.6 - 6.75 | 25.45 | 25.2 | 19.50 | 151-01244 |
| CC23-CC17FT9X17-PA66HIRHSUV-BK | | 9.0 x 17.0 | 0.6 - 6.75 | 29.3 | 32.8 | 20.5 | 156-04011 |
| Connector Clip, round hole, fir tree | | | | | | | |
| CC08-PA66HIRHS-NA | | 6.25 - 6.75 | 0.7 - 5.75 | 20.55 | 25.2 | 19.81 | 151-00677 |

All dimensions in mm. Subject to technical changes.

Connector Clips

Connector Interface –
Type G2

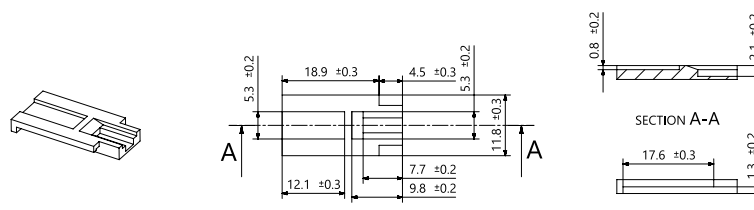



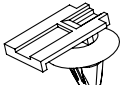
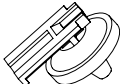
| PART DESCRIPTION | Drawing | for Hole Ø (FH) | Panel Thickness | Height (H) | Length (L) | Width (W) | Article-No. |
|--|---|-----------------|-----------------|------------|------------|-----------|-------------|
| Connector Clip, oval hole, fir tree | | | | | | | |
| CC12-PA66HIRHSUV-BK |  | 8.0 x 15.0 | 0.6 - 6.5 | 22.2 | 25.5 | 18.29 | 151-01136 |

All dimensions in mm. Subject to technical changes.

Connector Clips

Connector Interface –
Type G5

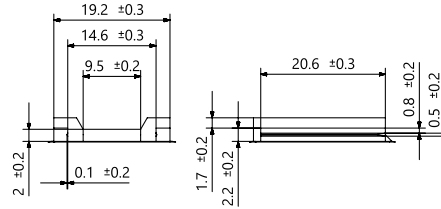
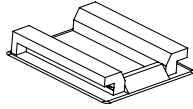


| PART DESCRIPTION | Drawing | for Hole Ø (FH) | Panel Thickness | Height (H) | Length (L) | Width (W) | Article-No. |
|---|---|-----------------|-----------------|------------|------------|-----------|-------------|
| Connector Clip, oval hole, arrow head, sealed | | | | | | | |
| TCCSFT6.5X13PT0.6-2.0-MD-PA66HIRHS/EPDM-BK |  | 6.5 x 13.0 | 0.6 - 2.0 | 15.8 | 23.4 | 16.0 | 151-01272 |
| Connector Clip, round hole, arrow head | | | | | | | |
| CC19SFT7-PA66HIRHS-BK |  | - | 2.3 - 3.0 | 17.4 | 21.4 | 6.3 | 151-02550 |
| Connector Clip, round hole, arrow head, sealed | | | | | | | |
| CC19SFT7-MD-PA66HIRHS-BK |  | 7.0 | 0.8 - 1.5 | 17.4 | 21.4 | 16.7 | 151-03204 |

All dimensions in mm. Subject to technical changes.

Connector Clips

Connector Interface –
Type G6

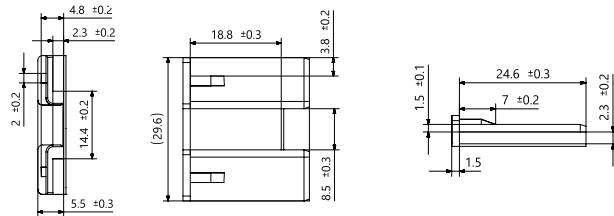
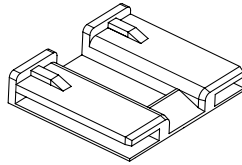


| PART DESCRIPTION | Drawing | for Hole Ø (FH) | Panel Thickness | Height (H) | Length (L) | Width (W) | Article-No. |
|--|---------|-----------------|-----------------|------------|------------|-----------|-------------|
| Connector Clip, oval hole, fir tree | | | | | | | |
| CCPAEBDOP6.0x12.0-PA66HIRHS-BK | | 6.2 x 12.2 | 0.6 - 6.0 | 16.9 | 29.0 | 26.0 | 133-03902 |

All dimensions in mm. Subject to technical changes.

Connector Clips

Connector Interface –
Type G7

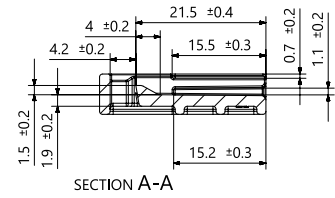
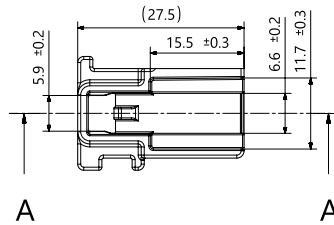
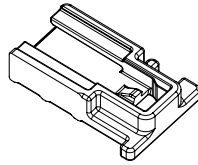


| PART DESCRIPTION | Drawing | for Hole Ø (FH) | Panel Thickness | Height (H) | Length (L) | Width (W) | Article-No. |
|--|---------|-----------------|-----------------|------------|------------|-----------|-------------|
| Connector Clip, oval hole, arrow head | | | | | | | |
| Halter CCSFT6.2x12.2-PA66HIRHS-BK | | 6.2 x 12.2 | 1.5 - 3.0 | 23.7 | 38.3 | 29.6 | 151-01464 |

All dimensions in mm. Subject to technical changes.

Connector Clips

Connector Interface –
Type H1

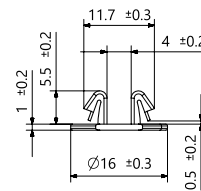
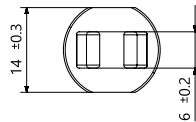


| PART DESCRIPTION | Drawing | Bundling Bar Length | Height (H) | Length (L) | Width (W) | Article-No. |
|---------------------------------|---------|---------------------|------------|------------|-----------|-------------|
| Bundling Clip, connector | | | | | | |
| BCBRKT55M-PPS-SR | | 50.0 | 15.8 | 70.8 | 50.0 | 151-01537 |
| BCBRKT55M-PA66HIRHS-NA | | 50.0 | 15.8 | 70.9 | 50.0 | 151-01404 |

All dimensions in mm. Subject to technical changes.

Connector Clips

Connector Interface –
Type J1

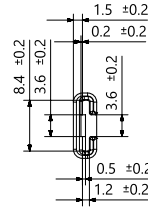
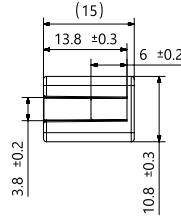
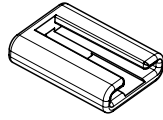


| PART DESCRIPTION | Drawing | for Hole Ø (FH) | Panel Thickness | Height (H) | Length (L) | Width (W) | Article-No. |
|---|---------|-----------------|-----------------|------------|------------|-----------|-------------|
| Connector Clip, round hole, arrow head | | | | | | | |
| CCSCSFT8-0.6-1.4-PA66HIRHS-BK | | 8.0 | 0.6 - 1.4 | 18.9 | 16.0 | 16.0 | 151-01171 |
| Connector Clip, round hole, fir tree | | | | | | | |
| CCSC-FT10LG-PA66HIRHS-BK | | 10.0 | 1.5 - 6.7 | 23.9 | 22.0 | 22.0 | 151-02209 |

All dimensions in mm. Subject to technical changes.

Connector Clips

Connector Interface –
Type L1

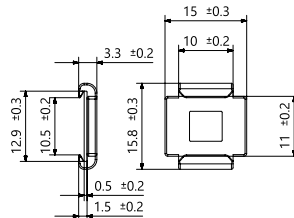
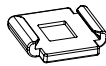


| PART DESCRIPTION | Drawing | for Hole Ø (FH) | Panel Thickness | Height (H) | Length (L) | Width (W) | Article-No. |
|--|---------|-----------------|-----------------|------------|------------|-----------|-------------|
| Connector Clip, oval hole, arrow head | | | | | | | |
| CCKSFT6.2x12.2-PA66HIRHSUV-BK | | 6.2 x 12.2 | 2.3 - 2.7 | 14.0 | 15.0 | 16.0 | 151-01003 |

All dimensions in mm. Subject to technical changes.

Connector Clips

Connector Interface –
Type L3

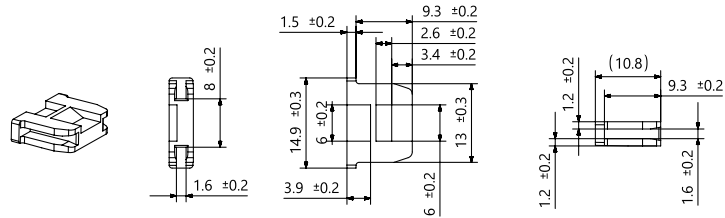


| PART DESCRIPTION | Drawing | for Hole Ø (FH) | Panel Thickness | Height (H) | Length (L) | Width (W) | Article-No. |
|--|---------|-----------------|-----------------|------------|------------|-----------|-------------|
| Connector Clip, oval hole, arrow head | | | | | | | |
| CCWPM712A-PA66HSW-BK | | 7.0 x 12.0 | 1.0 - 4.8 | 15.0 | 19.1 | 23.5 | 151-03215 |
| CCWPM712B-PA66HSW-BK | | 7.0 x 12.0 | 6.0 - 12.0 | 15.0 | 27.3 | 25.5 | 151-03216 |

All dimensions in mm. Subject to technical changes.

Connector Clips

Connector Interface –
Type M1

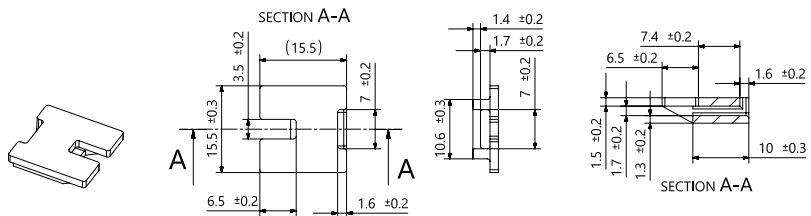


| PART DESCRIPTION | Drawing | Stud Ø | Height (H) | Length (L) | Width (W) | Article-No. |
|---------------------------------------|---------|-----------|---------------|---------------|--------------|-------------|
| Connector Clip, stud size 6 mm | | | | | | |
| CCSBS6-PA66HIRHS-BK | | 6.0 | 18.6 | 16.0 | 10.8 | 151-01698 |

All dimensions in mm. Subject to technical changes.

Connector Clips

Connector Interface –
Type M2

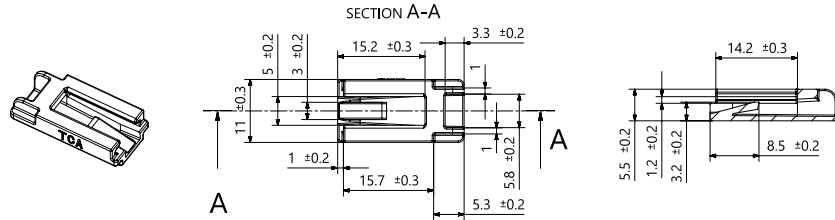


| PART DESCRIPTION | Drawing | for Hole Ø (FH) | Panel Thickness | Height (H) | Length (L) | Article-No. |
|---|---------|--------------------|--------------------|---------------|---------------|-------------|
| Connector Clip, round hole, arrow head | | | | | | |
| Big Connector Clip-PA66HIRHS-BK | | 6.5 - 6.7 | 0.7 - 2.7 | 16.7 | 20.1 | 151-01837 |

All dimensions in mm. Subject to technical changes.

Connector Clips

Connector Interface –
Type N1

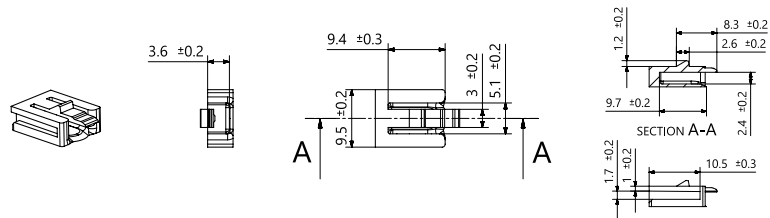


| PART DESCRIPTION | Drawing | for Hole Ø (FH) | Panel Thickness | Height (H) | Length (L) | Width (W) | Article-No. |
|--|---------|---|-----------------|------------|------------|-----------|-------------|
| Connector Clip, oval hole, fir tree | | | | | | | |
| CCOVAL4-PA66HIRHSUV-BK | | 6.2 x 12.2, 6.5 x 12.5, 6.5 x 13.0, 7.0 x 12.0 | 0.6 - 6.75 | 21.6 | 23.6 | 17.6 | 151-01246 |

All dimensions in mm. Subject to technical changes.

Connector Clips

Connector Interface –
Type N2

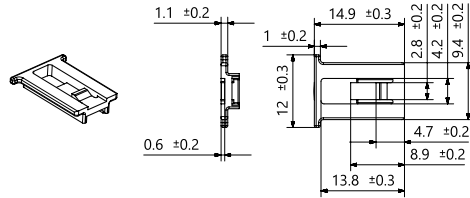


| PART DESCRIPTION | Drawing | for Hole Ø (FH) | Panel Thickness | Height (H) | Length (L) | Width (W) | Article-No. |
|--|---------|---|-----------------|------------|------------|-----------|-------------|
| Connector Clip, oval hole, arrow head, sealed | | | | | | | |
| TCCSFT6.2x12.2-MD-PA66HIRHS/EPDM-BK | | 6.2 x 12.2 | 0.60 - 2.0 | 15.0 | 22.0 | 19.0 | 151-01254 |
| Connector Clip, oval hole, fir tree | | | | | | | |
| CCFTOVAL-PA66HIRHS-BK | | 6.2 - 12.2, 6.5 x 12.5, 6.5 x 13.0, 7.0 x 12.0 | 0.6 - 6.75 | 19.3 | 22.0 | 16.0 | 151-01057 |

All dimensions in mm. Subject to technical changes.

Connector Clips

Connector Interface –
Type N3

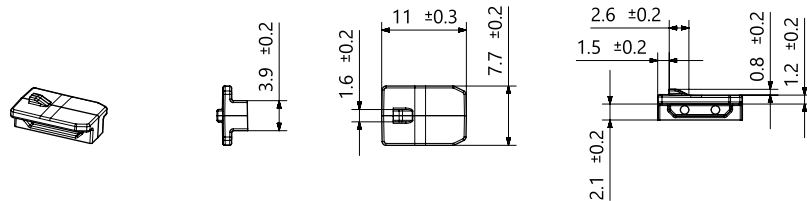


| PART DESCRIPTION | Drawing | for Hole Ø (FH) | Panel Thickness | Height (H) | Length (L) | Width (W) | Article-No. |
|--|---------|---|-----------------|------------|------------|-----------|-------------|
| Connector Clip, oval hole, fir tree | | | | | | | |
| CCFTOVAL-Big-Slot-PA66HIRHS-BK | | 6.2 x 12.2, 6.5 x 12.5, 6.5 x 13.0, 7.0 x 12.0 | 0.6 - 4.0 | 16.8 | 23.6 | 17.6 | 151-02654 |

All dimensions in mm. Subject to technical changes.

Connector Clips

Connector Interface –
Type P1

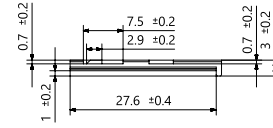
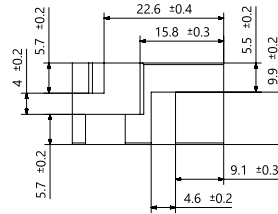
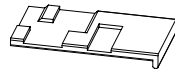


| PART DESCRIPTION | Drawing | for Hole Ø (FH) | Panel Thickness | Height (H) | Length (L) | Width (W) | Article-No. |
|--|---------|---|-----------------|------------|------------|-----------|-------------|
| Connector Clip, oval hole, fir tree | | | | | | | |
| CCOVAL5-PA66HIRHSUV-BK | | 6.2 x 12.2, 6.5 x 12.5, 6.5 x 13.0, 7.0 x 12.0 | 0.6 - 6.75 | 19.55 | 23.6 | 17.6 | 151-01286 |

All dimensions in mm. Subject to technical changes.

Connector Clips

Connector Interface –
Type R5

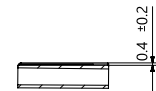
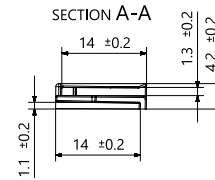
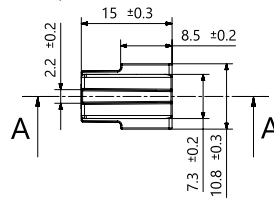
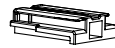


| PART DESCRIPTION | Drawing | for Hole Ø (FH) | Panel Thickness | Height (H) | Length (L) | Width (W) | Article-No. |
|---|---------|-----------------|-----------------|------------|------------|-----------|-------------|
| Connector Clip, round hole, fir tree | | | | | | | |
| Big YCC TS-PA66HIRHS-BK | | 6.4 - 7.1 | 0.7 - 5.1 | 15.7 | 28.6 | 16.0 | 151-02273 |

All dimensions in mm. Subject to technical changes.

Connector Clips

Connector Interface –
Type R6



| PART DESCRIPTION | Drawing | for Hole Ø (FH) | Panel Thickness | Height (H) | Length (L) | Width (W) | Article-No. |
|--|---------|-----------------|-----------------|------------|------------|-----------|-------------|
| Connector Clip, oval hole, arrow head | | | | | | | |
| CCSFT8.5X16-PA66HIRHS-BK | | 8.5 x 16.0 | 0.7 - 1.5 | 15.0 | 19.5 | 18.5 | 151-01004 |

All dimensions in mm. Subject to technical changes.